



WORLD SHIPPING COUNCIL  
PARTNERS IN TRADE



## The Panama Canal... And why it is crucial to global trade

# It all started with the Panama Railroad



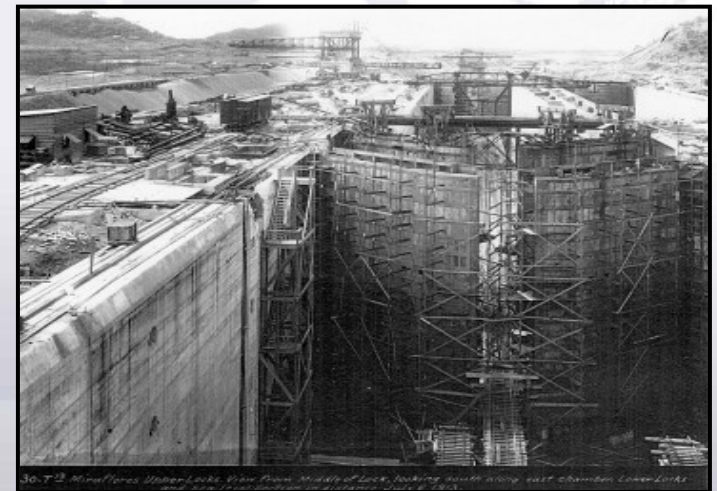
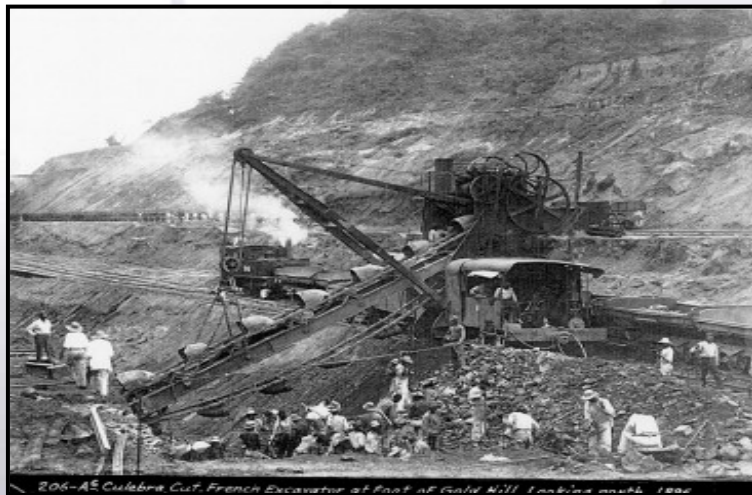
- It was originally built in 1855
- And was the first ocean-to-ocean land bridge
- It acted as the Atlantic–Pacific California gold rush route



WORLD SHIPPING COUNCIL  
PARTNERS IN TRADE

# Then came the canal...

- It is now an all-water Atlantic-Pacific transit
- Opened in 1914
- It revolutionized sea trade
- And is considered one of the all-time great engineering feats!
- It also permanently established the strategic importance of Panama





WORLD SHIPPING COUNCIL  
PARTNERS IN TRADE

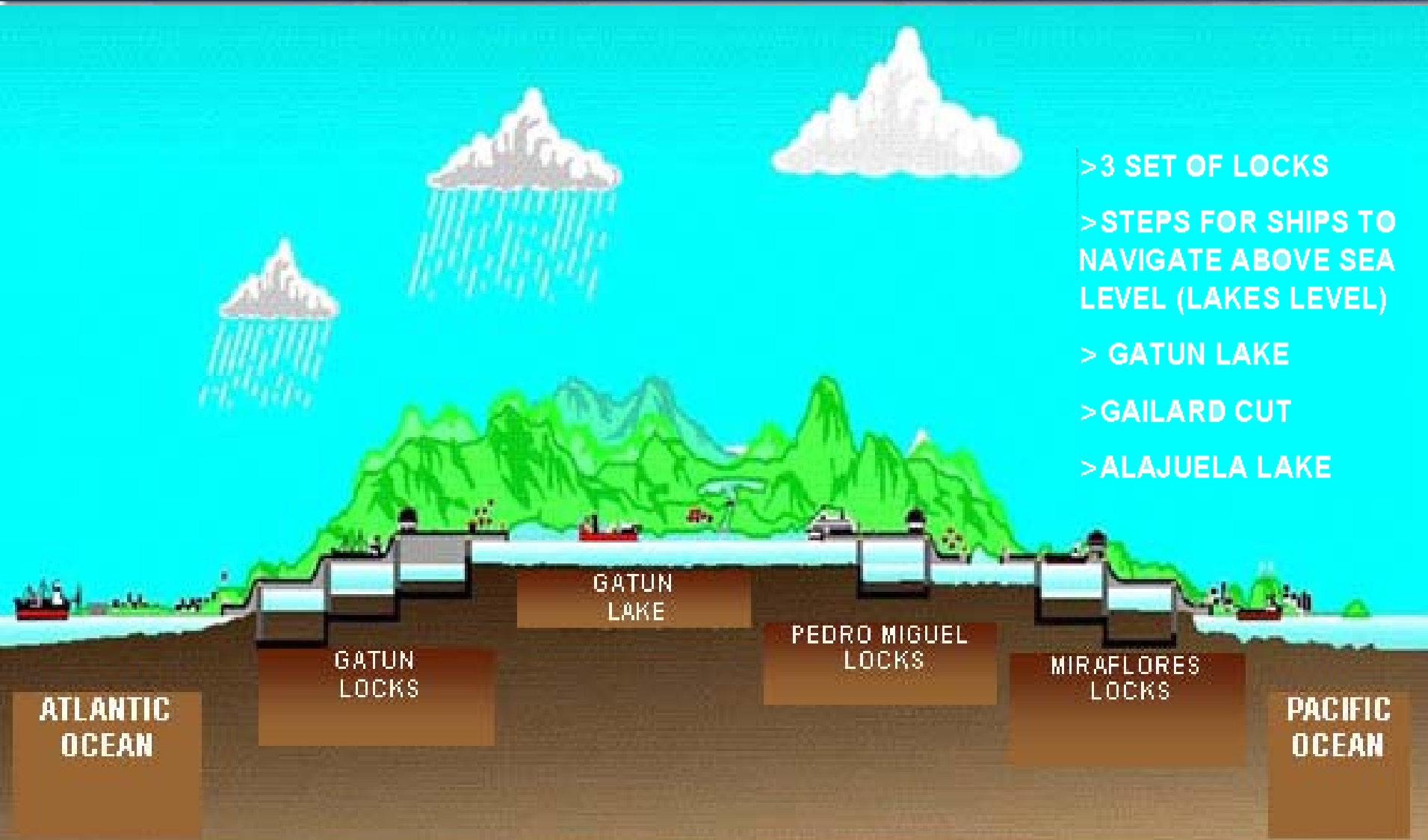
# This is where the Panama Canal is located





WORLD SHIPPING COUNCIL  
PARTNERS IN TRADE

# And this is how it works.

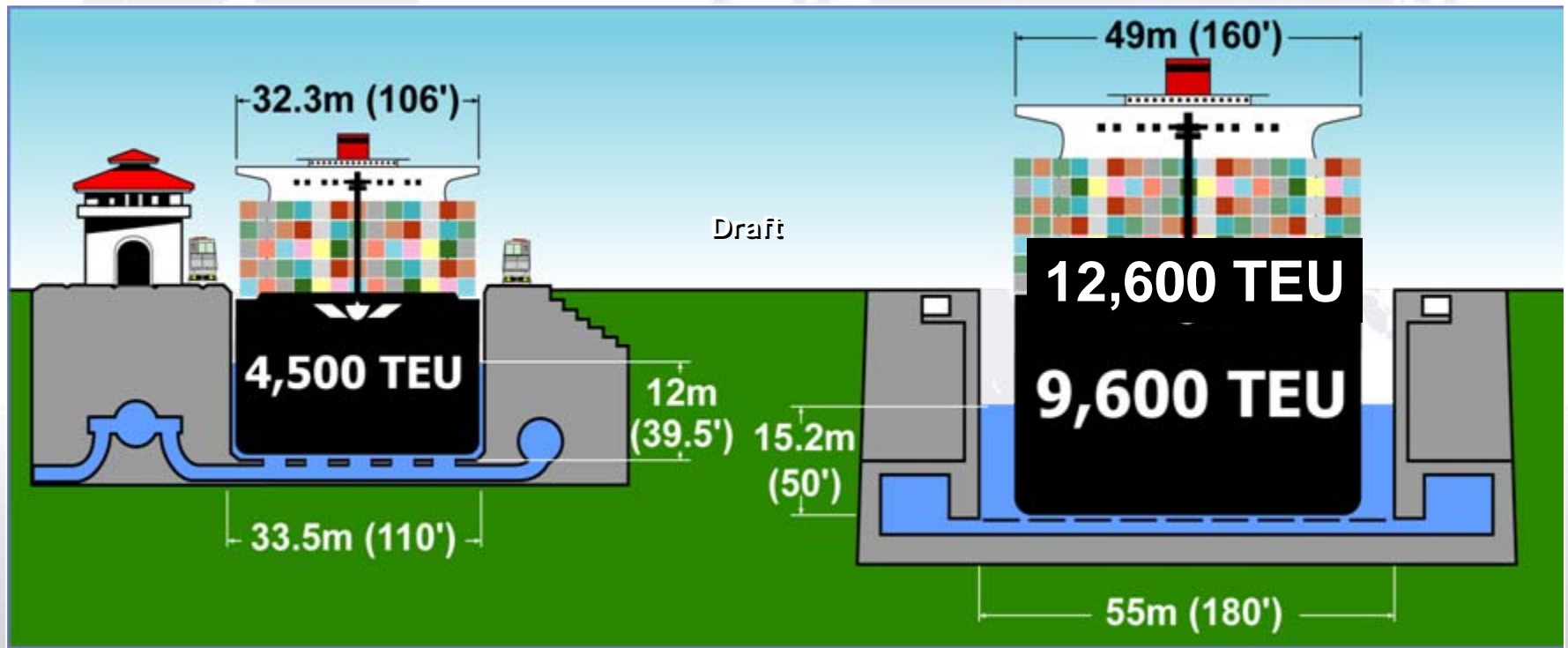




# Locks and vessel dimensions

Existing locks allow vessels  
this size to pass through

New locks let much bigger  
ships travel through the canal



Chamber Length 305m (1,000')  
Max. Vessel LOA 294.3m (965')

Chamber Length 427m (1,400')  
Max. Vessel LOA 366m (1,200')



WORLD SHIPPING COUNCIL  
PARTNERS IN TRADE

For more information about the liner shipping industry that uses the Panama Canal, visit [www.worldshipping.org](http://www.worldshipping.org)

---

For more information about the Panama Canal, visit [www.pancanal.com](http://www.pancanal.com)